

Ethylene Propylene Diene Monomer

EPDM

FEATURES

- EPDM has excellent chemical resistance
- Excellent heat resistance
- Durable, cost effective and flexible
- Excellent UV ratings
- Easily repaired by owner, which makes the product user friendly
- Available in 45, & 60 mil
- Reinforced EPDM is available

EPDM is a unique and popular choice for a variety of applications due to its outstanding flexibility, ease of installation, and UV stability. EPDM is becoming a widely used and accepted liner in several geomembrane markets.

Colorado Lining International can supply you with material or facilitate a full installation with one of our certified installation crews. We want to work with you to make your job a success.

APPLICATIONS

- Golf course ponds
- Pond & lake liners
- Aquaculture
- Canal liners
- Water features
- Fish hatcheries
- Residential applications

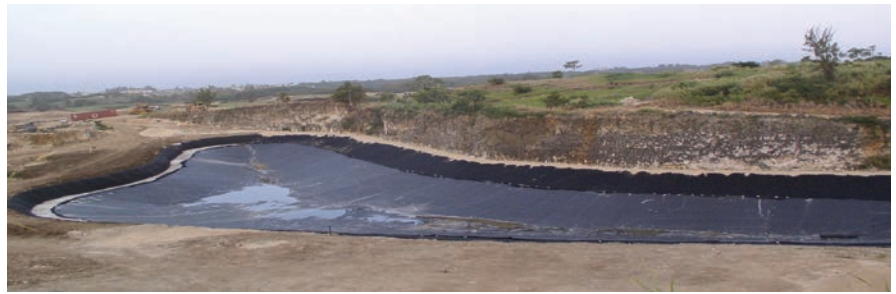
FOR MORE INFO CALL 800.524.8672



WWW.COLORADOLINING.COM

VERSION UPDATE 02.21.17

Product Data



EPDM Material Information

Property	Test Method	Test Value		Testing Frequency (minimum)
Thickness, mm (min. ave.) Lowest individual of 10 values	D 5199	45 -10%	60 -10%	40,000 lb
Tensile properties ⁽¹⁾ -break strength lb/in ² (min.) -break elongation, % (min.)	D 882	1200 500	1200 500	40,000 lb
Tear resistance, lb (min.)	D 1004	12	15	50,000 lb
Puncture resistance, lb (min.)	D 4833	30	40	50,000 lb
Multiaxial tension -break elongation, % (min.)	D 5617	100	100	per formulation ⁽²⁾
Brittleness temperature, deg F (max.)	D 2136	-49	-49	per formulation ⁽²⁾
Oven Aging at 100°C for 170 hours - % retained on tensile break strength - % retained on tensile break elongation - surface cracking at 7X magnification	D 5721 D 882 D 882 GM 16	90 75	90 75	per formulation ⁽²⁾
UV Resistance (a) Xenon Arc for 2000 hours at 80°C - % retained on tensile break strength - % retained on tensile break elongation - surface cracking at 7X magnification or (b) UVA-Fluorescent after 7500 hours total testing time ⁽³⁾ - % retained on tensile break strength - % retained on tensile break elongation - surface cracking at 7X magnification	G 26 D 882 D 882 GM 16 D 7238 D 882 D 882 GM 16	90 75	90 75	per formulation ⁽²⁾
			no cracks	
			no cracks	

(1) machine direction (MD) and cross machine direction (XMD) average values should be on the basis of 5 test specimens in each direction

(2) at least once per year or whenever formulation changes

(3) condition of the test should be 20 hours UV cycle at 750C followed by 4 hours condensation at 600C.

FOR SALES INFORMATION

Corporate Headquarters - Denver: 800.524.8672 / 303.841.2022

Houston Office: 888.546.4641 California Office: 303.951.5942

WWW.COLORADOLINING.COM

CLI has over 35 years of experience in the geosynthetics industry, and we offer custom Design-Build solutions that are cost effective and reliable. Our services include Geomembrane and Spray Coating Materials, Custom Fabrication, and Certified Installation.