



CO: 800.524.8672
TX: 888.546.4641
www.coloradolining.com

Erosion Control

Colorado Lining International offers a wide variety of Erosion Control solutions. Erosion Control will not only improve the strength and stability of your jobsite, but improve the aesthetic look of your job. Erosion Control will reduce exposure to stormwater violations and fines.

Colorado Lining International can facilitate a full installation with one of our certified installation crews. We want to work with you to make your job a success.

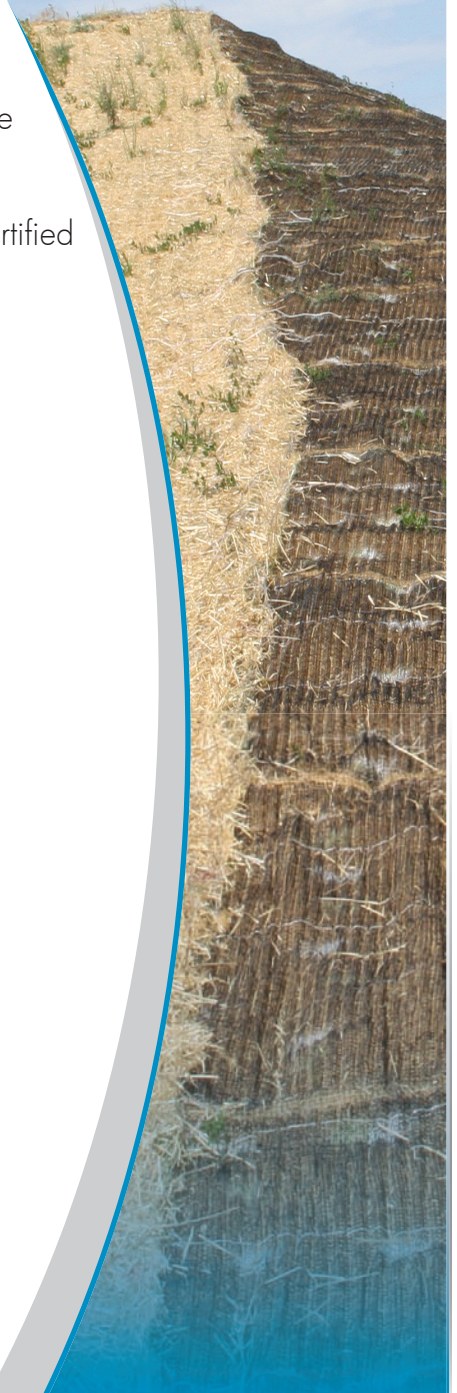
Product Features:

- Temporary
- Permanent
- Erosion Control Mats
- Degradable Mats
- Large Selection of Products

Uses & Applications:

- Slope Protection
- Wave Damage Protection
- Edge Treatment
- Turf Reinforcement

- *Quick Turnaround*
- *Available in Custom Sized Panels*
- *Wide Range of Products*





Erosion Control Product Data Sheet

	Product	Product Description	Typical Applications	Limiting Shear Stress Flow Duration lbs./ft. ² (Pascal)				Permissible Velocity ft./s (m/s)		FHWA FP-03 Category	ECTC Category	Typical Projects
				Bare Soil		Vegetated		Unvegetated	Vegetated			
				0.5 hrs	50 hrs	0.5 hrs	50 hrs					
Permanent	P300	5.0-lb. UV-stable polypropylene top net 100% polypropylene fiber matrix 3.0-lb. UV-stable polypropylene bottom net	1:1 & greater slopes Medium- to highflow channels Stream banks Shorelines	3.0 (144)	2.0 (98)	8.0 (384)	8.0 (384)	9.0 (2.7)	16.0 (4.9)	Type 5.A and B	Type 5.A and B	Roadside ditches, stream banks, shorelines, steep slopes
Vmax3 ® Permanent Composite Turf Reinforcement Mats	SC250	5.0-lb. UV-stable polypropylene top and bottom nets 24.0-lb. UV-stable polypropylene corrugated center net 70% straw/30% coconut fiber matrix	1:1 & greater slopes Medium- to highflow channels Stream banks	3.0 (144)	2.5 (120)	10.0 (480)	8.0 (383)	9.5 (2.9)	15.0 (4.6)	Type 5.A, B, and C	Type 5.A, B, and C	Roadside ditches, golf course swales, steep slopes, stream banks
	C350	8.0-lb. UV-stable polypropylene top and bottom nets 24.0-lb. UV-stable polypropylene corrugated center net 100% coconut fiber matrix	1:1 & greater slopes High-flow channels Shorelines	3.2 (153)	3.0 (144)	12.0 (576)	10.0 (480)	10.5 (3.2)	20.0 (6.0)	Type 5.A, B, and C	Type 5.A, B, and C	Severe slopes, drainage areas, high-flow areas, stream banks, shorelines
	P550	24.0-lb. UV-stable polypropylene top and bottom nets 24.0-lb. UV-stable polypropylene corrugated center net 100% polypropylene fiber matrix	1:1 & greater slopes Extreme, high-flow channels Shorelines	4.0 (191)	3.25 (156)	14.0 (672)	12.0 (576)	12.5 (3.8)	25.0 (7.6)	Type 5.A, B, and C	Type 5.A, B, and C	Severe slopes, spillways, swales, high-flow areas, shorelines

	Product	Product Description	Longevity	Typical Applications	Permissible Shear Stress, Bare Soil lbs./ft. ² (Pascal)	Max. Flow Velocity ft./s (m/s)	FHWA FP-03 Category	ECTC Category	Typical Projects	
Short-Term	S75	1.50-lb. photodegradable polypropylene top net 100% straw fiber matrix	12 months	4:1 to 3:1 slopes Low-flow channels	1.55 (74)	5.00 (1.52)	Type 2.C	Type 2.C	Highways, mines, pipeline, woodlands, golf courses, residential lawns, landfill caps	
	DS75	1.50-lb. accelerated photodegradable polypropylene top net 100% straw fiber matrix	45 days							
	S150	1.50-lb. photodegradable polypropylene top and bottom nets 100% straw fiber matrix	12 months	3:1 to 2:1 slopes Medium-flow channels		1.75 (84)	6.00 (1.83)	Type 2.D		Type 2.D
	DS150	1.50-lb. accelerated photodegradable polypropylene top and bottom nets 100% straw fiber matrix	60 days							
Extended-Term	C125	3.0-lb. UV-stable polypropylene top and bottom nets 100% coconut fiber matrix	36 months	1:1 & greater slopes High-flow channels Stream banks	2.25 (108)	10.00 (3.05)	Type 4	Type 4	Landfill caps, drainage ditches, stream bank restoration, steep slopes	
	SC150	3.0-lb. UV-stable polypropylene top net 70% straw/30% coconut fiber matrix 1.50-lb. photodegradable polypropylene bottom net	24 months	2:1 to 1:1 slopes Medium-flow channels	2.00 (96)	8.00 (2.44)	Type 3.B	Type 3.B	Steeper slopes, landfills, moderate drainage swales	
BioNet® Biodegradable Erosion Control Blankets	C125BN	9.30-lb. leno-woven biodegradable jute top net 100% coconut fiber matrix 7.70-lb. woven biodegradable jute bottom net	24 months	1:1 & greater slopes High-flow channels Shorelines	2.35 (112)	10.00 (3.05)	Type 4	Type 4	Wetland mitigation, bioengineering, shaded areas, environmentally sensitive sites	
	SC150BN	9.30-lb. leno-woven biodegradable jute top net 70% straw/30% coconut fiber matrix 7.70-lb. woven biodegradable jute bottom net	18 months	2:1 to 1:1 slopes Medium-flow channels	2.10 (100)	8.00 (2.44)	Type 3.B	Type 3.B		
	S75BN	9.30-lb. leno-woven biodegradable jute top net 100% straw fiber matrix	12 months	4:1 to 3:1 slopes Low-flow channels	1.60 (76)	5.00 (1.52)	Type 2.C	Type 2.C		
	S150BN	9.30-lb. leno-woven biodegradable jute top net 100% straw fiber matrix 7.70-lb. woven biodegradable jute bottom net	12 months	3:1 to 2:1 slopes Medium-flow channels	1.85 (88)	6.00 (1.83)	Type 2.D	Type 2.D		