

# A Solution to Liquid Movement Issues

## Geocomposite

### FEATURES

- Geocomposites provide lateral movement of liquids
- Excellent underlayment and boulder pads
- Can be 3 foot wide strips used as gas ventilation system under liner

Geocomposites are a solution to many liquid and gas movement issues. Its unique design allows for lateral movement and drainage under extreme conditions.

Colorado Lining International can facilitate a full installation with one of our certified installation crews. We want to work with you to make your job a success.

### APPLICATIONS

- Slope protection
- Wave damage protection
- Venting of gas
- Leak detection layers
- Sub-grade enhancement
- Drainage
- Geomembrane protection

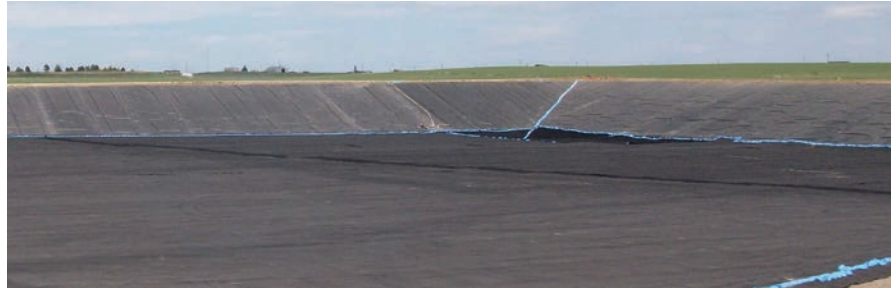
FOR MORE INFO CALL 800.524.8672



[WWW.COLORADOLINING.COM](http://WWW.COLORADOLINING.COM)

VERSION UPDATE 02.21.17

# Product Data



## Geocomposite Material Information

Tested Property	Test Method	Frequency	Minimum Average Value <sup>1</sup>		
			6 oz/yd <sup>2</sup>	8 oz/yd <sup>2</sup>	10 oz/yd <sup>2</sup>
<b>Geocomposite</b>					
Transmissivity <sup>2</sup> , gal/min/ft (m <sup>2</sup> /sec)	ASTM D 4716	1/540,000 ft <sup>2</sup>			
Double-sided composite			0.48 (1 x 10 <sup>-4</sup> )	0.48 (1 x 10 <sup>-4</sup> )	0.43 (9 x 10 <sup>-5</sup> )
Single-sided composite			4.83 (1 x 10 <sup>-3</sup> )	4.83 (1 x 10 <sup>-3</sup> )	4.34 (9 x 10 <sup>-4</sup> )
Ply Adhesion, lb/in (g/cm)	ASTM D 7005	1/50,000 ft <sup>2</sup>	1.0 (178)	1.0 (178)	1.0 (178)
<b>Geonet Core<sup>3</sup> - GSE HyperNet</b>					
Transmissivity <sup>2</sup> , gal/min/ft (m <sup>2</sup> /sec)	ASTM D 4716		9.66 (2 x 10 <sup>-3</sup> )	9.66 (2 x 10 <sup>-3</sup> )	9.66 (2 x 10 <sup>-3</sup> )
Density, g/cm <sup>3</sup>	ASTM D 1505	1/50,000 ft <sup>2</sup>	0.94	0.94	0.94
Tensile Strength (MD) lb/in (N/mm)	ASTM D 5035/7179	1/50,000 ft <sup>2</sup>	45 (7.9)	45 (7.9)	45 (7.9)
Carbon Black Content, %	ASTM D 1603 <sup>4</sup> /4218	1/50,000 ft <sup>2</sup>	2.0	2.0	2.0
<b>Geotextile<sup>3,4</sup></b>					
Mass per Unit Area, oz/yd <sup>2</sup> (g/m <sup>2</sup> )	ASTM D 5261	1/90,000 ft <sup>2</sup>	6 (200)	8 (270)	10 (335)
Grab Tensile, lb (N)	ASTM D 4632	1/90,000 ft <sup>2</sup>	160 (710)	220 (975)	260 (1,155)
Puncture Strength, lb (N)	ASTM D 4833	1/90,000 ft <sup>2</sup>	90 (395)	120 (525)	165 (725)
AOS, US sieve (mm)	ASTM D 4751	1/540,000 ft <sup>2</sup>	70 (0.212)	80 (0.180)	100 (0.150)
Permittivity, (sec <sup>-2</sup> )	ASTM D 4491	1/540,000 ft <sup>2</sup>	1.5	1.3	1.0
Flow Rate, gpm/ft <sup>2</sup> (lpm/m <sup>2</sup> )	ASTM D 4491	1/540,000 ft <sup>2</sup>	110 (4,480)	95 (3,865)	75 (3,050)
UV Resistance, % retained	ASTM D 4355 (after 500 hours)	once per formulation	70	70	70

1) AOS in mm is a maximum value.

2) Gradient of 0.1, normal load of 10,000 psf, water at 70°F between steel plates for 15 minutes. Contact GSE for performance transmissivity value for use in design.

3) Component properties prior to lamination.

4) Refer to geotextile product data sheet for additional specifications.

5) Roll widths and lengths have a tolerance of ±1%.

\*Modified

## FOR SALES INFORMATION

Corporate Headquarters - Denver: 800.524.8672 / 303.841.2022

Houston Office: 888.546.4641 California Office: 303.951.5942

[WWW.COLORADOLINING.COM](http://WWW.COLORADOLINING.COM)

CLI has over 35 years of experience in the geosynthetics industry, and we offer custom Design-Build solutions that are cost effective and reliable. Our services include Geomembrane and Spray Coating Materials, Custom Fabrication, and Certified Installation.